

VYMK — MYITKYINA

*Note: The following sections in this chapter are intentionally left blank:
AD 2.16, AD 2.21, AD 2.22, AD 2.23.*

VYMK AD 2.1 AERODROME LOCATION INDICATOR AND NAME

VYMK — MYITKYINA

VYMK AD 2.2 AERODROME GEOGRAPHICAL AND ADMINISTRATIVE DATA

1	ARP coordinates and site at AD	252258.04N 0972109.60E
2	Direction and distance from city	4 KM West of town
3	Elevation/Reference temperature	147.5 M (483.9 FT)/Nil
4	Geoid undulation at ARP	-43 M
5	MAG VAR/Annual change	1° W (1956)/annual change negligible
6	AD Administration, address, telephone, telefax, telex, AFS	DEPARTMENT OF CIVIL AVIATION Post: Myitkyina airport MYITKYINA KACHIN STATE MYANMAR Tel: 95 74 2526354 - 95 74 2526042 AFTN: VYMKYDYX
7	Types of traffic permitted (IFR/VFR)	IFR/VFR
8	Remarks	Nil

VYMK AD 2.3 OPERATIONAL HOURS

1	AD Administration	HO
2	Customs and immigration	HS
3	Health and sanitation	Health: Nil Sanitation: Nil
4	AIS Briefing Office	Nil
5	ATS Reporting Office (ARO)	Nil
6	MET Briefing Office	Nil
7	ATS	HO
8	Fuelling	
9	Handling	HO
10	Security	
11	De-icing	Nil
12	Remarks	Nil

VYMK AD 2.4 HANDLING SERVICES AND FACILITIES

1	Cargo-handling facilities	Baggage Trolleys / Carts
---	----------------------------------	--------------------------

2	Fuel/oil types	Fuel: Nil Oil: Nil
3	Fuelling facilities/capacity	Nil
4	De-icing facilities	Nil
5	Hangar space for visiting aircraft	Nil
6	Repair facilities for visiting aircraft	Nil
7	Remarks	Nil

VYMK AD 2.5 PASSENGER FACILITIES

1	Hotels	Nil
2	Restaurants	Available in airport compound
3	Transportation	Taxi and bus services available
4	Medical facilities	Nil
5	Bank and Post Office	Bank: Nil Post: Nil
6	Tourist Office	Nil
7	Remarks	Nil

VYMK AD 2.6 RESCUE AND FIRE FIGHTING SERVICES

1	AD category for fire fighting	CAT 3
2	Rescue equipment	CAT 3
3	Capability for removal of disabled aircraft	TBN
4	Remarks	Nil

VYMK AD 2.7 SEASONAL AVAILABILITY — CLEARING

There is no requirement for clearing as the aerodrome is available throughout the year.

VYMK AD 2.8 APRONS, TAXIWAYS AND CHECK LOCATIONS DATA

1	Apron surface and strength	Surface: Asphalt Concrete Strength: 33,112 KG Area: 183 M x 55 M
2	Taxiway width, surface and strength	Nil
3	ACL location and elevation	Nil
4	VOR checkpoints	Nil
5	INS checkpoints	Nil
6	Remarks	Nil

VYMK AD 2.9 SURFACE MOVEMENT GUIDANCE AND CONTROL SYSTEM AND MARKINGS

1	Aircraft stand ID signs	Taxiing guidance signs at all intersections with TWY and RWY and at all holding positions: Guide lines at apron.
	TWY guide lines	
	Visual docking/parking guidance system of aircraft stands.	
2	RWY and TWY markings and LGT	RWY: Designation, THR, TDZ, Centre line, aiming point, edge RWY: edge, THR and End Lighted LGT: RWY edge, THR, End
3	Stop bars	Nil
4	Remarks	Nil

VYMK AD 2.10 AERODROME OBSTACLES

In Area 2

Designator	Part ID	Type	Coordinates	ELEV	HGT	Marking/LGT type, colour	Remarks
1	2	3	4	5	6	7	8
ANTENNA	Nil	Antenna	252337.88N 0972103.07E	197M	Nil	LGT	Nil
OBSTACLE	Nil	Building	252658.02N 0972838.33E	527M	Nil	LGT	Nil

In Area 3

Designator	Part ID	Type	Coordinates	ELEV	HGT	Marking/LGT type, colour	Remarks
1	2	3	4	5	6	7	8
Nil							

VYMK AD 2.11 METEOROLOGICAL INFORMATION PROVIDED

1	Associated MET Office	to be notified
---	------------------------------	----------------

VYMK AD 2.12 RUNWAY PHYSICAL CHARACTERISTICS

RWY Designations	TRUE & MAG BRG	Dimensions of RWY	Strength (PCN) and surface of RWY and SWY	THR & RWY end coordinates THR geoid undulation	THR elevation and highest elevation of TDZ of precision APP RWY
1	2	3	4	5	6
04	037.00°	2133 M x 46	33,112 KG	252233.69N 0972050.22E	144.0M
22	217.00°	M	Asphalt Concrete	252329.82N 0972135.05E	147.5M

Slope of RWY-SWY	SWY dimensions	CWY dimensions (M)	Strip dimensions	OFZ	Remarks
7	8	9	10	11	12
0.03%	Nil	Nil	2294 M x 150 M	Nil	Nil
0.45%	Nil	Nil		Nil	Nil

VYMK AD 2.13 DECLARED DISTANCES

RWY Designator	THR or start of take off run	TORA	TODA	ASDA	LDA	Remarks
1	2	3	4	5	6	7
04	THR	2133 M	2133 M	2133 M	2133 M	Nil

RWY Designator	THR or start of take off run	TORA	TODA	ASDA	LDA	Remarks
1	2	3	4	5	6	7
22	THR	2133 M	2133 M	2133 M	2133 M	Nil

VYMK AD 2.14 APPROACH AND RUNWAY LIGHTING

RWY Designator	APCH LGT type LEN INTST	RTHL colour WBAR	VASIS (MEHT) PAPI	RTZL LEN	RCLL LEN, spacing, colour, INTST	REDL LEN, spacing, colour, INTST	RENL colour, WBAR	STWL LEN, colour	Remarks
1	2	3	4	5	6	7	8	9	10
← 04	Nil	Green	Nil (13.4 M) PAPI	Nil	Nil	White (Length 2133 M, Spacing 60 M, Final 600 M of RWY end; Yellow) LIM	Red	Nil	Nil
← 22	Nil	Green	Nil (15.4 M) PAPI	Nil	Nil	White (Length 2133 M, Spacing 60 M, Final 600 M of RWY end; Yellow,) LIM	Red	Nil	Nil

VYMK AD 2.15 OTHER LIGHTING, SECONDARY POWER SUPPLY

← 1	ABN/IBN location, characteristics and hours of operation	ABN:Control Tower,2 Light Head Altn W/G 26 Flg/min (Rotating)
2	LDI location and LGTAnemometer location and LGT	Nil
3	TWY edge and centre line lighting	Apron Edge: All blue
4	Secondary power supply/switch-over time	3 MIN (Manual)
5	Remarks	Nil

VYMK AD 2.17 AIR TRAFFIC SERVICES AIRSPACE

Name	Unit providing service	Call sign Languages Area and conditions of use Hours of service	Transition altitude	Remarks
Lateral limits Vertical limits Class of airspace	2	3	4	5
MYITKYINA ATZ Circle: radius 5 NM, centred at 252258.04N 0972109.60E C	MYITKYINA TOWER	PAMTI TOWER: EN HO	12000 FT	Nil
MYITKYINA CTR Circle: radius 30 NM, centred at 252258.04N 0972109.60E C	MYITKYINA APPROACH CONTROL	MYITKYINA APP: EN HO	12000 FT	Nil

VYMK AD 2.18 ATS COMMUNICATION FACILITIES

Service designation	Call sign	Channel	Hours of operation	Remarks
1	2	3	4	5
MYITKYINA APPROACH CONTROL	MYITKYINA APP: EN	119.700 MHz	HO	Nil
MYITKYINA TOWER	PAMTI TOWER: EN	118.700 MHz	HO	Nil

VYMK AD 2.19 RADIO NAVIGATION AND LANDING AIDS

Type of aid CAT of ILS/MLS (MAG VAR)	ID	Frequency	Hours of operation	Transmitting antenna coordinates	Elevation of DME transmitting antenna	Remarks
1	2	3	4	5	6	7
NDB	MK	275 kHz	HO	252301.15N 0972125.54E	Not applicable	Coverage: 50 NM Em: NON/A2A
DVOR/DME	MKN	CH 104X 115.7 MHz	HO	252315.54N 0972130.31E	Not applicable	Coverage: 50 NM Em: A9WNON

VYMK AD 2.20 LOCAL TRAFFIC REGULATIONS**1 AIRPORT REGULATIONS**

Myitkyina Airport complies MCAR Part 139, Section 2 Aerodrome Standards. This aerodrome standard include the following:

- a. Physical Characteristic
- b. Obstacle Restriction and Removal
- c. Visual Aids for Navigation
- d. Visual Aids for Denoting Obstacles
- e. Visual Aids for Denoting Restricted Use Areas
- f. Electrical System
- g. Aerodrome Operational Services, Equipment and Installation
- h. Aerodrome Maintenance

2 TAXIING TO AND FROM STANDS

Arriving aircraft will be allocated a stand number by the TWR.

VYMK AD 2.24 CHARTS RELATED TO AN AERODROME

Aerodrome Chart - ICAO	AD 2.VYMK-ADC
Instrument Approach Chart - ICAO - RWY 04 NDB	VYMK AD 2-9
Instrument Approach Chart - ICAO - RWY 22 NDB	VYMK AD 2-11
Instrument Approach Chart - ICAO - RWY 04 VOR/DME	AD 2.VYMK-VOR/DME04
Instrument Approach Chart - ICAO - RWY 22 VOR/DME	AD 2.VYMK-VOR/DME22

PAGE INTENTIONALLY LEFT BLANK

AERODROME CHART - ICAO

25°22' 58.04"N
97°21' 09.60"E

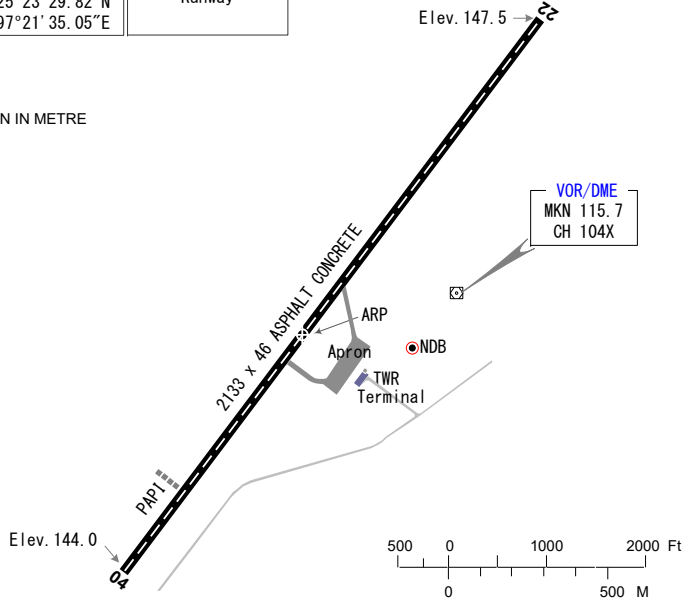
TWR 118.7

MYITKYINA/
Myitkyina

AD ELEV 147.5 M

RWY	DIRECTION	THR	BEARING STRENGTH
04	037°	25°22' 33.69"N 97°20' 50.22"E	33 112 Kg Runway
22	217°	25°23' 29.82"N 97°21' 35.05"E	

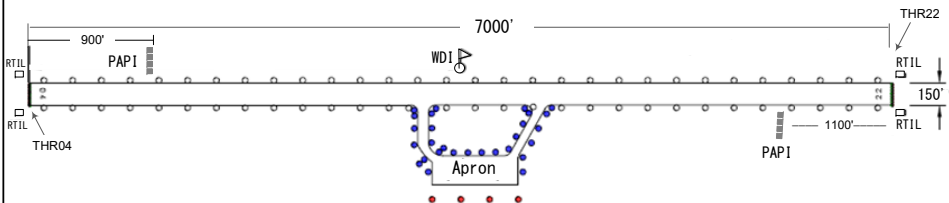
ELEVATION AND DIMENSION IN METRE
BEARINGS ARE MAGNETIC



MARKING AIDS RWY 04/22



LIGHTING AIDS RWY 04/22 AND EXIT TWY



PAGE INTENTIONALLY LEFT BLANK