

VYHH — HEHO

Note: The following sections in this chapter are intentionally left blank:
AD 2.16, AD 2.21, AD 2.22, AD 2.23.

VYHH AD 2.1 AERODROME LOCATION INDICATOR AND NAME

VYHH — HEHO

VYHH AD 2.2 AERODROME GEOGRAPHICAL AND ADMINISTRATIVE DATA

1	ARP coordinates and site at AD	204449.36N 0964731.28E
2	Direction and distance from city	3.7 KM North West of Heho town
3	Elevation/Reference temperature	1199.4 M (3935 FT)/31.1 °C
4	Geoid undulation at ARP	-38 M
5	MAG VAR/Annual change	1 ° W (1956)/annual change negligible
6	AD Administration, address, telephone, telefax, telex, AFS	DEPARTMENT OF CIVIL AVIATION Post: Heho airport SHAN STATE MYANMAR Tel: 95 81 63032 AFTN: VYHHYDYX
7	Types of traffic permitted (IFR/VFR)	IFR/VFR
8	Remarks	Nil

VYHH AD 2.3 OPERATIONAL HOURS

1	AD Administration	HO
2	Customs and immigration	HS
3	Health and sanitation	Health: Nil Sanitation: Nil
4	AIS Briefing Office	Nil
5	ATS Reporting Office (ARO)	Nil
6	MET Briefing Office	Nil
7	ATS	HO
8	Fuelling	HO
9	Handling	Nil
10	Security	Nil
11	De-icing	Nil
12	Remarks	Nil

VYHH AD 2.4 HANDLING SERVICES AND FACILITIES

1	Cargo-handling facilities	Baggage Trolley or Carts
---	----------------------------------	--------------------------

2	Fuel/oil types	Fuel: JP1 Oil: Nil
3	Fuelling facilities/capacity	44000 gals Nil
4	De-icing facilities	Nil
5	Hangar space for visiting aircraft	Nil
6	Repair facilities for visiting aircraft	Nil
7	Remarks	Nil

VYHH AD 2.5 PASSENGER FACILITIES

1	Hotels	Nil
2	Restaurants	Available at airport
3	Transportation	Taxi service
4	Medical facilities	First Aid
5	Bank and Post Office	Bank: Three Money Changers and Two ATM Post: Available at Arrival Hall
6	Tourist Office	Nil
7	Remarks	Nil

VYHH AD 2.6 RESCUE AND FIRE FIGHTING SERVICES

1	AD category for fire fighting	CAT 5
2	Rescue equipment	CAT 5
3	Capability for removal of disabled aircraft	Nil
4	Remarks	Nil

VYHH AD 2.7 SEASONAL AVAILABILITY — CLEARING

There is no requirement for clearing as the aerodrome is available throughout the year.

VYHH AD 2.8 APRONS, TAXIWAYS AND CHECK LOCATIONS DATA

1	Apron surface and strength and area	Surface: Bitumen Strength: 68,039 kg Area: 427 M x 69 M
2	Taxiway width, surface and strength	Nil
3	ACL location and elevation	Nil
4	VOR checkpoints	Nil
5	INS checkpoints	Nil
6	Remarks	Nil

VYHH AD 2.9 SURFACE MOVEMENT GUIDANCE AND CONTROL SYSTEM AND MARKINGS

←	1	Aircraft stand ID signs	Nil
		TWY guide lines	
		Visual docking/parking guidance system of aircraft stands	
	2	RWY and TWY markings and LGT	RWY: Designation, THR, aiming point, Centre line, Edge RWY: Edge, THR and End Lighted
	3	Stop bars	Nil
	4	Remarks	Nil

VYHH AD 2.10 AERODROME OBSTACLES

In Area 2

Designator	Part ID	Type	Coordinates	ELEV	HGT	Marking/LGT type, colour	Remarks
1	2	3	4	5	6	7	8
OBST 33	Nil	Building	203812.38N 0965055.67E	1586M	Nil	LGT	Nil
PAGODA	Nil	Building	204557.42N 0964738.83E	1287M	Nil	LGT	Nil
OBST 19	Nil	Building	204645.07N 0964804.06E	1309M	Nil	LGT	Nil
SANDAW TAUNG	Nil	Building	204834.34N 0964641.68E	1409M	Nil	LGT	Nil
OBST 18	Nil	Building	204634.60N 0964247.36E	1491M	Nil	LGT	Nil

In Area 3

Designator	Part ID	Type	Coordinates	ELEV	HGT	Marking/LGT type, colour	Remarks
1	2	3	4	5	6	7	8
Nil							

VYHH AD 2.11 METEOROLOGICAL INFORMATION PROVIDED

1	Associated MET Office	to be notified
---	-----------------------	----------------

VYHH AD 2.12 RUNWAY PHYSICAL CHARACTERISTICS

RWY Designations	TRUE & MAG BRG	Dimensions of RWY	Strength (PCN) and surface of RWY and SWY	THR & RWY end coordinates THR geoid undulation	THR elevation and highest elevation of TDZ of precision APP RWY
1	2	3	4	5	6
18	181.00°	2591 M x 46	68,039 KG	204531.40N 0964731.46E	1199.4M
36	001.00°	M	Bitumen	204407.33N 0964731.09E	1171.5M

Slope of RWY-SWY	SWY dimensions	CWY dimensions (M)	Strip dimensions	OFZ	Remarks
7	8	9	10	11	12
1%, 1.54%, 1.35%	61 M x 45 M	213 M x 91 M	2895 M x 150 M	Nil	RESA 18 61 M x 91 M
0.9% ,0.8%	61 M x 45 M	122 M x 91 M		Nil	RESA 36 152 M x 91 M

VYHH AD 2.13 DECLARED DISTANCES

RWY Designator	THR or start of take off run	TORA	TODA	ASDA	LDA	Remarks
1	2	3	4	5	6	7
← 18	THR	2591 M	2591 M	2652 M	2591 M	Nil
← 36	THR	2591 M	2591 M	2652 M	2591 M	Nil

VYHH AD 2.14 APPROACH AND RUNWAY LIGHTING

RWY Designator	APCH LGT type LEN INTST	RTHL colour WBAR	VASIS (MEHT) PAPI	RTZL LEN	RCLL LEN, spacing, colour, INTST	REDL LEN, spacing, colour, INTST	RENL colour, WBAR	STWL LEN, colour	Remarks
1	2	3	4	5	6	7	8	9	10
← 18	Nil	Green	Nil (17.8 M) PAPI	Nil	Nil	White (Length 2591 M, Spacing 60 M, Final 600 M of RWY end; Yellow) LIH	Red	Nil	Nil
← 36	SALS (Elevated) 420 M LIM	Green	Nil (16.1 M) PAPI	Nil	Nil	White (Length 2591 M Spacing 60 M, Final 600 M of RWY end; Yellow) LIH	Red	Nil	Nil

VYHH AD 2.15 OTHER LIGHTING, SECONDARY POWER SUPPLY

1	ABN/IBN location, characteristics and hours of operation	ABN:OLD TERMINAL ,2 Light Head Altn Flg WG 26 Flg/min (Rotating)
2	LDI location and LGTAnemometer location and LGT	Nil
3	TWY edge and centre line lighting	Nil
4	Secondary power supply/switch-over time	3 Min (Manual)
5	Remarks	Nil

VYHH AD 2.17 AIR TRAFFIC SERVICES AIRSPACE

Name	Unit providing service	Call sign Languages Area and conditions of use Hours of service	Transition altitude	Remarks
Lateral limits Vertical limits Class of airspace	2	3	4	5
1	2	3	4	5
HEHO ATZ Circle: radius 5 NM, centred at 204449.36N 0964731.28E ARP C	HEHO TOWER	HEHO TOWER: EN HO	11000 FT	Nil

Lateral limits	Name		Unit providing service	Call sign Languages Area and conditions of use Hours of service	Transition altitude	Remarks
	Vertical limits	Class of airspace				
1	2	3	4	5		
HEHO CTR Circle: radius 35 NM, centred at 204449.36N 0964731.28E ARP C	FL 130 STD GND		HEHO APPROACH CONTROL	HEHO APPROACH: EN HO	11000 FT	Nil

VYHH AD 2.18 ATS COMMUNICATION FACILITIES

Service designation	Call sign	Channel	Hours of operation	Remarks
1	2	3	4	5
HEHO APPROACH CONTROL	HEHO APPROACH: EN	119.700 MHz	HO	Nil
HEHO TOWER	HEHO TOWER: EN	118.100 MHz	HO	Nil

VYHH AD 2.19 RADIO NAVIGATION AND LANDING AIDS

Type of aid CAT of ILS/MLS (MAG VAR)	ID	Frequency	Hours of operation	Transmitting antenna coordinates	Elevation of DME transmitting antenna	Remarks
1	2	3	4	5	6	7
DVOR/DME	HHO	113.2 MHz CH 79X	HO	204452.90N 0964723.74E	Not applicable	Coverage: 70 NM Em: A9WN0N

VYHH AD 2.20 LOCAL TRAFFIC REGULATION

1 AIRPORT REGULATIONS

Heho Airport complies MCAR Part 139, Section 2 Aerodrome Standards. This aerodrome standard include the following:

- Physical Characteristic
- Obstacle Restriction and Removal
- Visual Aids for Navigation
- Visual Aids for Denoting Obstacles
- Visual Aids for Denoting Restricted Use Areas
- Electrical System
- Aerodrome Operational Services, Equipment and Installation
- Aerodrome Maintenance

2 TAXIING TO AND FROM STANDS

Arriving aircraft will be allocated a stand number by the TWR.

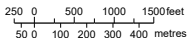
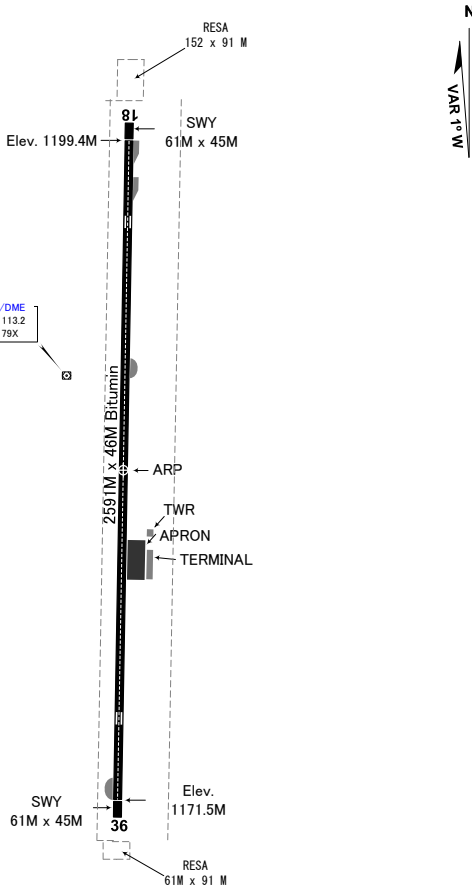
VYHH AD 2.24 CHARTS RELATED TO AN AERODROME

Aerodrome Chart - ICAO [AD 2.VYHH-ADC](#)
Instrument Approach Chart - ICAO - RWY36 - VOR/DME36 [AD 2.VYHH-VOR/DME36](#)

PAGE INTENTIONALLY LEFT BLANK

RWY	DIRECTION	THR	BEARING STRENGTH
18	181°	20°45'31.40"N 96°47'31.46"E	68 039 Kg Runway
36	001°	20°44'07.33"N 96°47'31.09"E	

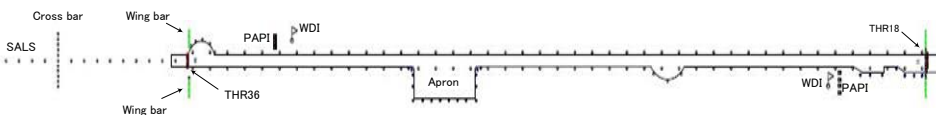
ELEVATION AND DIMENSION IN METRE
BEARINGS ARE MAGNETIC



MARKING AIDS RWY 18/36



LIGHTING AIDS RWY 36/18



PAGE INTENTIONALLY LEFT BLANK