

## VYDW — DAWEI/DAWEI

*Note: The following sections in this chapter are intentionally left blank:  
AD 2.16, AD 2.21, AD 2.22, AD 2.23.*

### VYDW AD 2.1 AERODROME LOCATION INDICATOR AND NAME

VYDW — DAWEI/DAWEI

### VYDW AD 2.2 AERODROME GEOGRAPHICAL AND ADMINISTRATIVE DATA

1	<b>ARP coordinates and site at AD</b>	140550.55N 0981224.18E
2	<b>Direction and distance from city</b>	4.8 KM North-East of town
3	<b>Elevation/Reference temperature</b>	25.6 M (84 FT)/Nil
4	<b>Geoid undulation at ARP</b>	-35 M
5	<b>MAG VAR/Annual change</b>	1° W (1956)/annual change negligible
6	<b>AD Administration, address, telephone, telefax, telex, AFS</b>	DEPARTMENT OF CIVIL AVIATION Post: Dawei airport DAWEI TANINTHARYI DIVISION Tel: 95 59 2021058 AFTN: VYDWYDYX
7	<b>Types of traffic permitted (IFR/VFR)</b>	IFR/VFR
8	<b>Remarks</b>	Nil

### VYDW AD 2.3 OPERATIONAL HOURS

1	<b>AD Administration</b>	HO
2	<b>Customs and immigration</b>	HS
3	<b>Health and sanitation</b>	Health: Nil Sanitation: Nil
4	<b>AIS Briefing Office</b>	Nil
5	<b>ATS Reporting Office (ARO)</b>	Nil
6	<b>MET Briefing Office</b>	Nil
7	<b>ATS</b>	HO
8	<b>Fuelling</b>	HO
9	<b>Handling</b>	HO
10	<b>Security</b>	Nil
11	<b>De-icing</b>	(Not practicable)
12	<b>Remarks</b>	Nil

### VYDW AD 2.4 HANDLING SERVICES AND FACILITIES

1	<b>Cargo-handling facilities</b>	Baggage Trolley
---	----------------------------------	-----------------

2	<b>Fuel/oil types</b>	Fuel: JET, A1 Oil: Nil
3	<b>Fuelling facilities/capacity</b>	Available Boxer 8000 Gals and 45000 Tank
4	<b>De-icing facilities</b>	Nil
5	<b>Hangar space for visiting aircraft</b>	Nil
6	<b>Repair facilities for visiting aircraft</b>	Nil
7	<b>Remarks</b>	Nil

## VYDW AD 2.5 PASSENGER FACILITIES

1	<b>Hotels</b>	Hotels in town
2	<b>Restaurants</b>	Restaurants in town
3	<b>Transportation</b>	Taxi service
4	<b>Medical facilities</b>	Nil
5	<b>Bank and Post Office</b>	Bank: Nil Post: Nil
6	<b>Tourist Office</b>	Nil
7	<b>Remarks</b>	Nil

## VYDW AD 2.6 RESCUE AND FIRE FIGHTING SERVICES

1	<b>AD category for fire fighting</b>	CAT 5
2	<b>Rescue equipment</b>	CAT 5
3	<b>Capability for removal of disabled aircraft</b>	Nil
4	<b>Remarks</b>	Nil

## VYDW AD 2.7 SEASONAL AVAILABILITY — CLEARING

There is no requirement for clearing as the aerodrome is available throughout the year.

## VYDW AD 2.8 APRONS, TAXIWAYS AND CHECK LOCATIONS DATA

← 1	<b>Apron surface and strength and area</b>	Surface: Concrete Strength: 395,987 kg Area: 183 M x 61 M Existing Apron Area : 61M x 76M
2	<b>Taxiway width, surface and strength</b>	Width: 31 M Surface: Bitumionus Strength: 33,112 kg
3	<b>ACL location and elevation</b>	Nil
4	<b>VOR checkpoints</b>	Nil
5	<b>INS checkpoints</b>	Nil
6	<b>Remarks</b>	Nil

## VYDW AD 2.9 SURFACE MOVEMENT GUIDANCE AND CONTROL SYSTEM AND MARKINGS

1	Aircraft stand ID signs	Nil
	TWY guide lines	
	Visual docking/parking guidance system of aircraft stands	
2	RWY and TWY markings and LGT	RWY: Designation, THR Centre line aiming point, Edge, THR, End Lighted.
3	Stop bars	Nil
4	Remarks	Nil

## VYDW AD 2.10 AERODROME OBSTACLES

### In Area 2

Designator	Part ID	Type	Coordinates	ELEV	HGT	Marking/LGT type, colour	Remarks
1	2	3	4	5	6	7	8
SABA TAUNG PAGODA	Nil	Building	140238.06N 0981428.45E	317M	Nil	LGT	Nil
KAN NI TAUNG	Nil	Building	140138.36N 0980512.81E	740M	Nil	LGT	Nil
KYI HMYAW TAUNG	Nil	Building	140935.02N 0960736.13E	301M	Nil	LGT	Nil
MOUNT TOP	Nil	Building	140631.37N 0980727.76E	473M	Nil	LGT	Nil

### In Area 3

Designator	Part ID	Type	Coordinates	ELEV	HGT	Marking/LGT type, colour	Remarks
1	2	3	4	5	6	7	8
Nil							

## VYDW AD 2.11 METEOROLOGICAL INFORMATION PROVIDED

1	Associated MET Office	to be notified
---	-----------------------	----------------

## VYDW AD 2.12 RUNWAY PHYSICAL CHARACTERISTICS

RWY Designations	TRUE & MAG BRG	Dimensions of RWY	Strength (PCN) and surface of RWY and SWY	THR & RWY end coordinates THR geoid undulation	THR elevation and highest elevation of TDZ of precision APP RWY
1	2	3	4	5	6
16	157.00°	3657 M x 30	53/R/C/W/T	140632.71N 0981205.61E	22.3M
34	337.00°	M	Concrete	140455.87N 0981248.26E	25.6M

Slope of RWY-SWY	SWY dimensions	CWY dimensions (M)	Strip dimensions	OFZ	Remarks
7	8	9	10	11	12
0.113%	61 M x 30 M	Nil	3859 M x 150 M	Nil	Nil
0.113%	61 M x 30 M	Nil		Nil	Nil

### VYDW AD 2.13 DECLARED DISTANCES

RWY Designator	THR or start of take off run	TORA	TODA	ASDA	LDA	Remarks
1	2	3	4	5	6	7
16	THR	3657 M	3657 M	3718 M	3237 M	Nil
34	THR	3657 M	3657 M	3718 M	3657 M	Nil

### VYDW AD 2.14 APPROACH AND RUNWAY LIGHTING

RWY Designator	APCH LGT type LEN INTST	RTHL colour WBAR	VASIS (MEHT) PAPI	RTZL LEN	RCLL LEN, spacing, colour, INTST	REDL LEN, spacing, colour, INTST	RENL colour, WBAR	STWL LEN, colour	Remarks
1	2	3	4	5	6	7	8	9	10
← 16	SALS (Inset) 420 M LIH	Green	Nil (12.9 M) PAPI	Nil	Nil	White (Length 3237 M, Spacing 60M, Final 600m of RWY end; Yellow ,High Intensity)	Red	Nil	Nil
← 34	Nil	Green	Nil (13.4 M) PAPI	Nil	Nil	White (Length 3657 M, Spacing 60M, Final 600m of RWY end; Yellow ,High Intensity)	Red	Nil	Nil

### VYDW AD 2.15 OTHER LIGHTING, SECONDARY POWER SUPPLY

1	ABN/IBN location, characteristics and hours of operation	ABN:CONTROL TOWER LED Flash Light WG 25 FLG/min
2	LDI location and LGTAnemometer location and LGT	Nil
3	TWY edge and centre line lighting	Nil
4	Secondary power supply/switch-over time	3 Min (Manual)
5	Remarks	Nil

### VYDW AD 2.17 AIR TRAFFIC SERVICES AIRSPACE

Name	Unit providing service	Call sign Languages Area and conditions of use Hours of service	Transition altitude	Remarks
Lateral limits Vertical limits Class of airspace	2	3	4	5
1	2	3	4	5
<b>DAWEI ATZ</b> Circle: radius 5 NM, centred at 140550.55N 0981224.18E ARP C	DAWEI TOWER	DAWEI TOWER: EN HO	6000 FT	Nil

Lateral limits	Name		Unit providing service	Call sign Languages Area and conditions of use Hours of service	Transition altitude	Remarks
	Vertical limits	Class of airspace				
1	2	3	4	5		
DAWEI CTR Circle: radius 30 NM, centred at 140550.55N 0981224.18E ARP C	FL 130 STD GND		DAWEI APPROACH CONTROL	DAWEI APP: EN HO	6000 FT	Nil

## VYDW AD 2.18 ATS COMMUNICATION FACILITIES

Service designation	Call sign	Channel	Hours of operation	Remarks
1	2	3	4	5
DAWEI APPROACH CONTROL	DAWEI APP: EN	119.700 MHz	HO	Nil
DAWEI TOWER	DAWEI TOWER: EN	118.700 MHz	HO	Nil

## VYDW AD 2.19 RADIO NAVIGATION AND LANDING AIDS

Type of aid CAT of ILS/MLS (MAG VAR)	ID	Frequency	Hours of operation	Transmitting antenna coordinates	Elevation of DME transmitting antenna	Remarks
1	2	3	4	5	6	7
DVOR/DME	DWI	CH 57X 112 MHz	H24	140602.02N 0981224.49E	98 FT	Coverage: 180 NM Em:
NDB	DWI	310 kHz	HO	140558.61N 0981201.67E	Not applicable	Coverage: 60 NM Em: NON/A2A

## VYDW AD 2.20 LOCAL TRAFFIC REGULATIONS

### 1 AIRPORT REGULATIONS

Dawei Airport complies MCAR Part 139, Section 2 Aerodrome Standards. This aerodrome standard include the following:

- Physical Characteristic
- Obstacle Restriction and Removal
- Visual Aids for Navigation
- Visual Aids for Denoting Obstacles
- Visual Aids for Denoting Restricted Use Areas
- Electrical System
- Aerodrome Operational Services, Equipment and Installation
- Aerodrome Maintenance

### 2 TAXIING TO AND FROM STANDS

Arriving aircraft will be allocated a stand number by the TWR.

## VYDW AD 2.24 CHARTS RELATED TO AN AERODROME

Aerodrome Chart - ICAO .....	<a href="#">AD 2.VYDW-ADC</a>
Instrument Approach Chart - ICAO - RWY16 - VOR .....	<a href="#">AD 2.VYDW-VOR16</a>
Instrument Approach Chart - ICAO - RWY16 - NDB .....	<a href="#">VYDW AD 2-13</a>

*PAGE INTENTIONALLY LEFT BLANK*

AERODROME CHART - ICAO

14°05'50.55"N  
98°12'24.18"E  
AD ELEV **25.6 M**

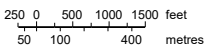
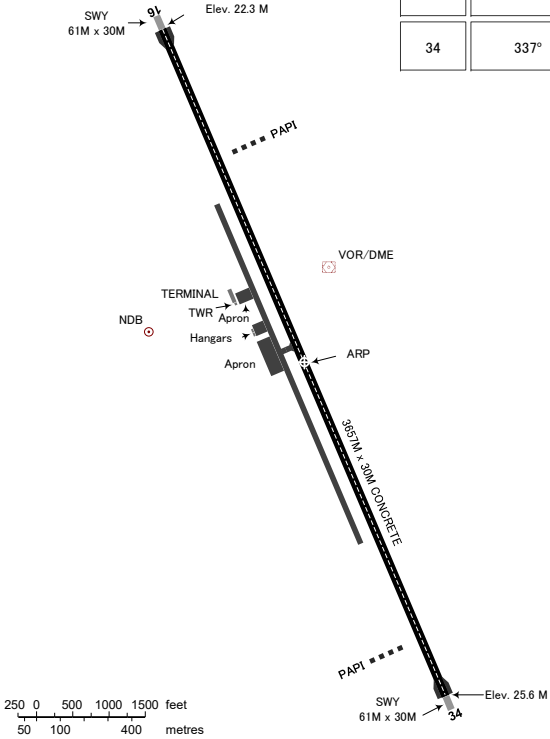
TWR 118.7

DAWEI/  
Dawei(VYDW)

RWY	DIRECTION	THR	BEARING STRENGTH
16	157°	14°06'32.71"N 98°12'05.61"E	PCN 53/R/C/W/T Runway
34	337°	14°04'55.87"N 98°12'48.26"E	

ELEVATION AND DIMENSION IN METRE  
BEARINGS ARE MAGNETIC

N



MARKING AIDS RWY 16/34



LIGHTING AIDS RWY 16/34



*PAGE INTENTIONALLY LEFT BLANK*