



### 3. Coding Table

VYME RNP RWY 36											
Serial Number	Path Descriptor	Waypoint Identifier	Fly-Over	Course °M(°T)	Magnetic Variation	Distance (NM)	Turn Direction	Altitude (FT)	Speed Limit (KIAS)	VPA(°)/TCH (FT)	Navigation Specification
001	IF	VIMUM	-	-	+0.55	-	-	+4000	-210	-	RNP APCH
002	TF	ME907	-	093(092.7)	+0.55	5.0	L	+2800	-	-	RNP APCH
001	IF	TELAM	-	-	+0.55	-	-	+4000	-210	-	RNP APCH
002	TF	ME907	-	003(002.7)	+0.55	5.0	-	+2800	-	-	RNP APCH
001	TF	ME907	-	-	+0.55	5.0	-	+2800	-	-	RNP APCH
002	TF	PAPSO	-	003(002.7)	+0.55	5.0	-	@1700	-	-	RNP APCH
003	TF	RWY36	Y	003(002.7)	+0.55	5.1	-	@82	-	3.0/50	RNP APCH
004	DF	ME908	Y	-	+0.55	-	-	-	-	-	RNP APCH
005	DF	ME909	-	-	+0.55	-	L	-	-	-	RNP APCH
006	TF	VIMUM	-	172(171.4)	+0.55	11.1	-	+4000	-210	-	RNP APCH
007	HM	VIMUM	-	093(092.7)	+0.55	-	R	+4000	-210	-	RNP APCH

### WAYPOINT LIST

VYME RNP RWY36	
Waypoint Identifier	Coordinates
VIMUM	12°15' 46.99" N 098°31' 38.71" E
TELAM	12°10' 31.85" N 098°36' 30.36" E
ME907	12°15' 32.86" N 098°36' 44.78" E
PAPSO	12°20' 33.87" N 098°36' 59.19" E
RWY36	12°25' 40.00" N 098°37' 13.86" E
ME908	12°32' 09.47" N 098°37' 32.53" E
ME909	12°26' 50.31" N 098°29' 56.19" E

INSTRUMENT APPROACH CHART-ICAO ..... [VYME RNP RWY36](#)

### 4. Cancellation

This AIRAC AIP SUPPLEMENT will remain in force until its contents have been incorporated in AIP Myanmar.

**Director General**  
**Department of Civil Aviation**

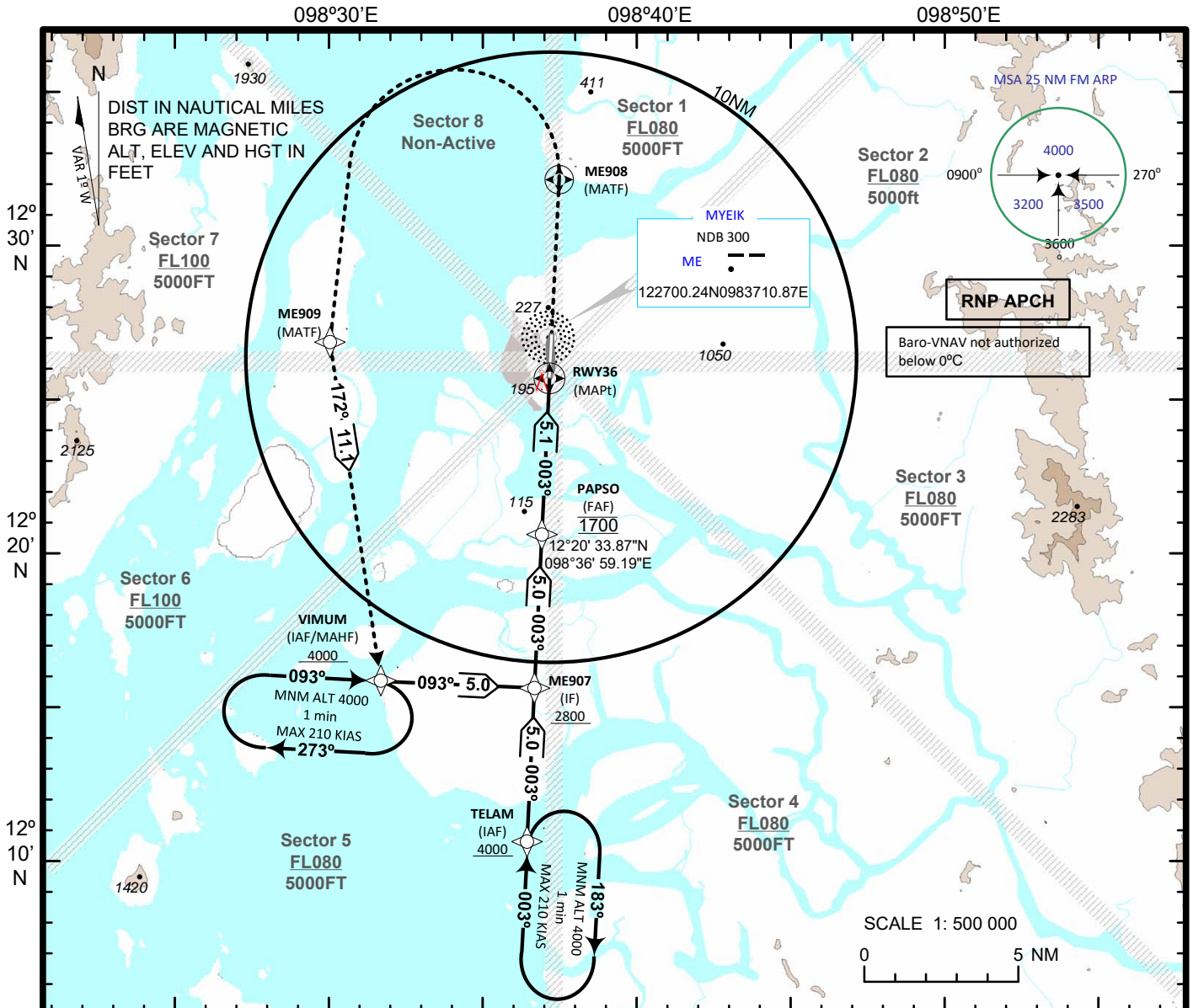
**AIP MYANMAR**  
**INSTRUMENT**  
**APPROACH**  
**CHART - ICAO**

**AERODROME ELEV 62 ft**  
 HEIGHTS RELATED TO  
 THR RWY 18 - ELEV 62 ft

MYEIK APP 118.7  
 MYEIK TWR 118.1

**AIRAC AIP SUP VYME**  
**07 SEP 2023**

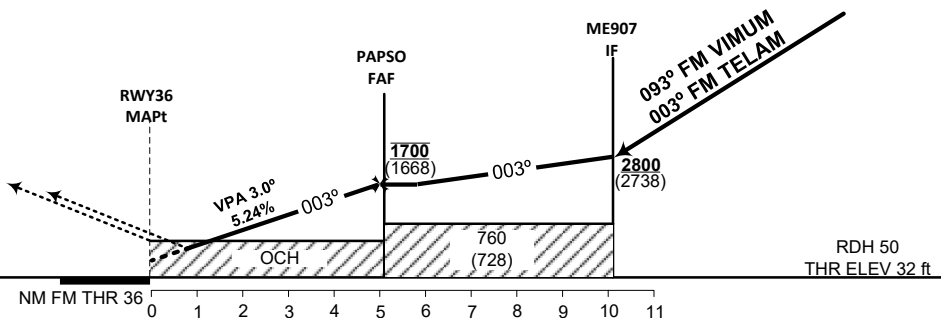
**MYEIK (VYME)**  
**RNP**  
**RWY 36**



Transition Level : FL065  
 Transition Altitude : 5000'

**MISSED APPROACH**

Climb direct to ME908, turn left direct to ME909 to VIMUM, climb to 4000' and hold (or) as instructed by ATC.



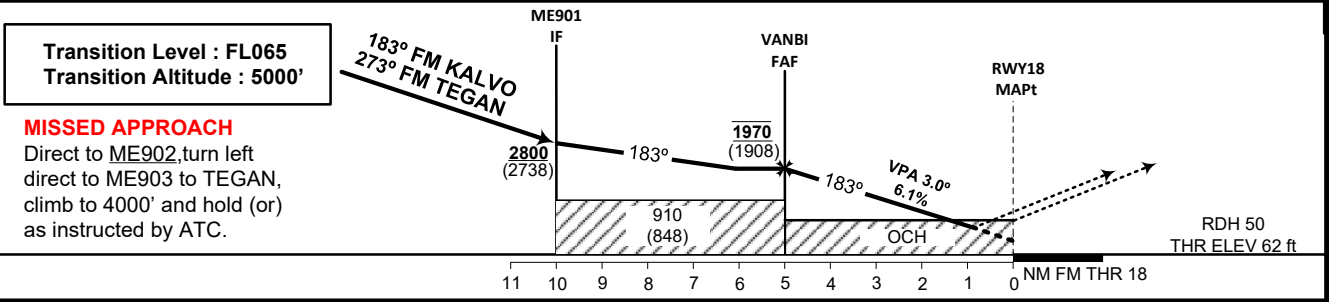
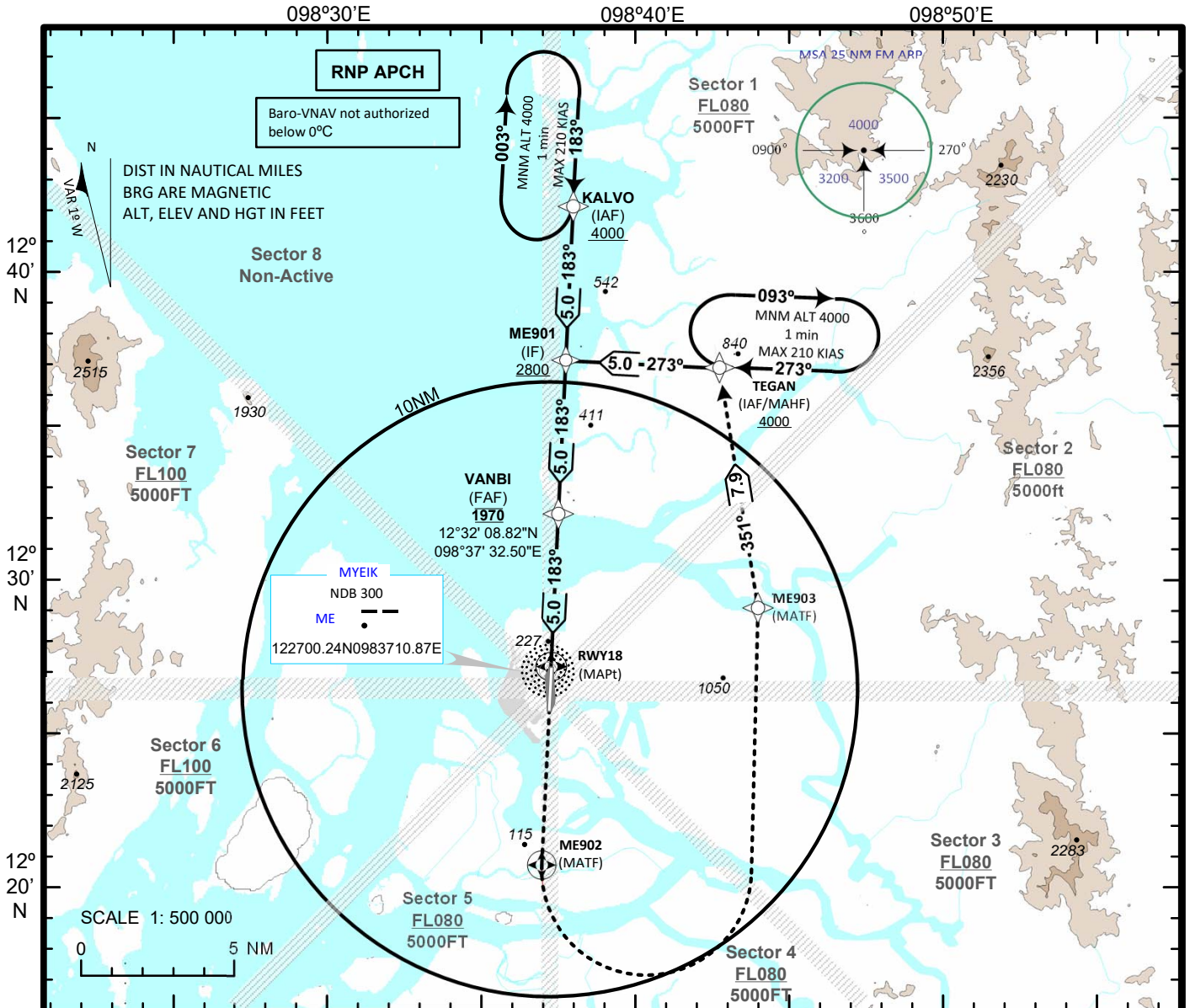
OCA ( OCH )		A	B	C				
Straight-in Approach	LNAV/VNAV	330(298)	340(308)	350(318)				
	LNAV		450(418)					
Circling		730(668)		1150(1088)				
	Distance from THR 18	NM	1	2	3	4	5	6
	Altitude	FT	400	716	1037	1356	1674	1992
	Ground Speed	KT	80	100	120	140	160	180
	Rate of Descent (6.1%)	FT/MIN	425	531	637	743	849	955

**INSTRUMENT  
APPROACH  
CHART - ICAO**

**AERODROME ELEV 62 ft  
HEIGHTS RELATED TO  
THR RWY 18 - ELEV 62 ft**

MYEIK APP 118.7  
MYEIK TWR 118.1

**MYEIK (VYME)  
RNP  
RWY 18**



<b>OCA ( OCH )</b>		<b>A</b>	<b>B</b>	<b>C</b>				
<b>Straight-in Approach</b>	<b>LNAV/VNAV</b>	<b>360(298)</b>	<b>370(308)</b>	<b>380(318)</b>				
	<b>LNAV</b>		<b>480(418)</b>					
<b>Circling</b>		<b>730(668)</b>		<b>1150(1088)</b>				
	<b>Distance from THR 18</b>	<b>NM</b>	<b>1</b>	<b>2</b>	<b>3</b>	<b>4</b>	<b>5</b>	<b>6</b>
	<b>Altitude</b>	<b>FT</b>	<b>483</b>	<b>853</b>	<b>1224</b>	<b>1595</b>	<b>1965</b>	<b>2336</b>
	<b>Ground Speed</b>	<b>KT</b>	<b>80</b>	<b>100</b>	<b>120</b>	<b>140</b>	<b>160</b>	<b>180</b>
	<b>Rate of Descent (6.1%)</b>	<b>FT/MIN</b>	<b>494</b>	<b>618</b>	<b>741</b>	<b>865</b>	<b>988</b>	<b>1112</b>